



Redco International

ISO 9001:2015 | 14001:2015 | OHSAS 18001:2007

MECHANICAL, ELECTRICAL AND PLUMBING WORKS



Precast Concrete & Hollowcore Factories | Readymix Concrete Plants | Steel cut & bend factory | Earthwork & Blasting
Civil Construction | Architectural Finishes | Steel Fabrication | MEP Grade A Contractor | Landscaping

BRIEF INTRODUCTION

Redco International is a leading industrial manufacturing and contracting group operating in Qatar since 1982. The company is owned by H.E. Sheikh Jassim bin Hamad Al Thani and Ex-Senator, Saif ur Rehman Khan. Redco International has been a leader in precast concrete manufacturing and erection in Qatar since the 1980s, and is also amongst the leaders in ready-mix concrete manufacturing, steel cut & bend, Mechanical-Electrical-Plumbing (MEP) and building works (general contracting).

Redco International employs 14000 people in Qatar, including more than 400 qualified civil, electrical and mechanical engineers. The company also has two sister companies in Pakistan: Redco Pakistan Limited (RPL) and Redco Textiles Limited (RTL), which employ more than 3000 people. **Redco Textiles Limited is a vertically integrated, ISO 9001 certified textiles manufacturing company which has spinning and weaving units as well as a captive power plant.** Furthermore, the group has also recently constructed a 1320 MW power plant at Port Qasim, Karachi, Pakistan.

In Qatar, **Redco International** is a well-known brand with a large collection of assets and projects that are visible across the country. The company owns more than 1000 units of construction equipment, which includes a large fleet of dumpers, trailers, ready-mix trucks, concrete pumps, excavators, bulldozers, wheel loaders, tower cranes, crawler cranes, mobile cranes, specialist precast/ steel cut & bend/ MEP equipment, and also a very large number of transport vehicles, including buses, cars and pick-ups for the company's 14000 employees.

Redco International currently has projects in hand worth QR. 6.0 billion. The company has an ISO 9001 certified quality management system and is licensed as a Grade-A civil and electro-mechanical contractor with all major government departments.

Redco International's strategic business interests and activities profile in Qatar and Pakistan include:

- Precast Concrete & Hollow core Plants – Design, Manufacturing & Erection
- Readymix Concrete Plants – Design, Manufacturing & Placing
- Earthworks & Blasting – Contractor, MOI approved blasting company
- General Contractor – EPC contractor, grade A
- Mechanical, Electrical, Plumbing (MEP) – grade A, Kahramaa approved
- Steel cut & bend Factory – Design, Manufacturing & Installation
- Architectural Finishes & Landscaping
- Textile – Weaving & Spinning Mills

Redco International is a conscientious contractor with an excellent Health and Safety record. The company has been given numerous Health and Safety awards by clients. The company has worked at prestigious projects for millions of man-hours without a single Lost Time Incident (LTI).

GREENLINE UNDERGROUND



GREENLINE UNDERGROUND



GREENLINE UNDERGROUND



GREENLINE UNDERGROUND



GREENLINE UNDERGROUND



GREENLINE UNDERGROUND



GREENLINE UNDERGROUND



GREENLINE UNDERGROUND



GREENLINE UNDERGROUND



GREENLINE UNDERGROUND



REDLINE NORTH ELEVATED & AT GRADE



REDLINE NORTH ELEVATED & AT GRADE



REDLINE NORTH ELEVATED & AT GRADE



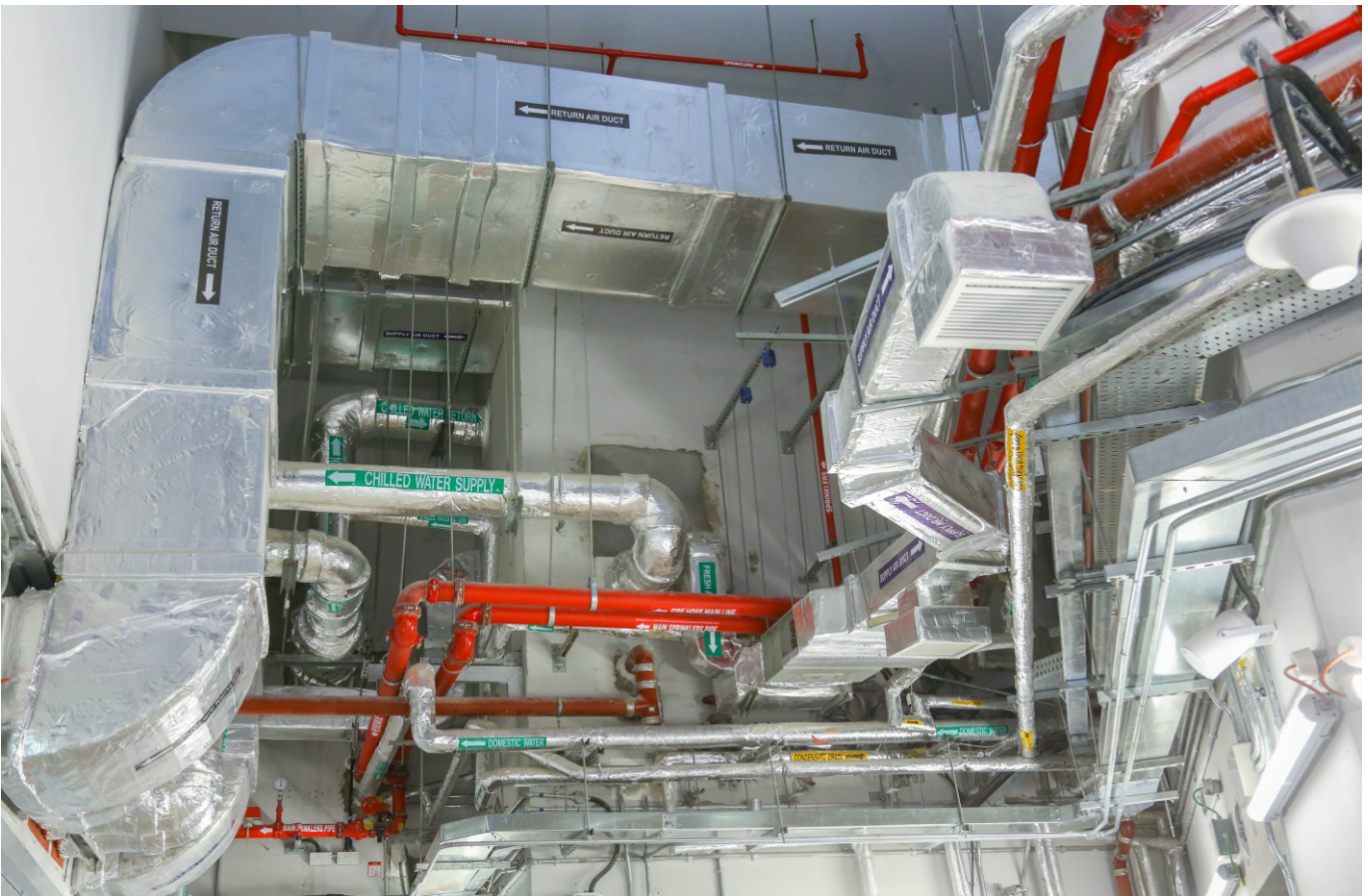
REDLINE NORTH ELEVATED & AT GRADE



REDLINE NORTH ELEVATED & AT GRADE



HAMAD INTERNATIONAL AIRPORT TERMINAL 1 STATION



HAMAD INTERNATIONAL AIRPORT TERMINAL 1 STATION



HAMAD INTERNATIONAL AIRPORT TERMINAL 1 STATION



HAMAD INTERNATIONAL AIRPORT TERMINAL 1 STATION



HAMAD INTERNATIONAL AIRPORT TERMINAL 1 STATION



GREENLINE ELEVATED & AT GRADE - AL RIFFAH STATION



GREENLINE ELEVATED & AT GRADE - AL RIFFAH STATION



GREENLINE ELEVATED & AT GRADE - AL RIFFAH STATION



GREENLINE ELEVATED & AT GRADE - AL RIFFAH STATION



GREENLINE ELEVATED & AT GRADE - AL RIFFAH STATION



EDUCATION CITY STATION



EDUCATION CITY STATION



EDUCATION CITY STATION



CREW ACCOMMODATION PROJECT

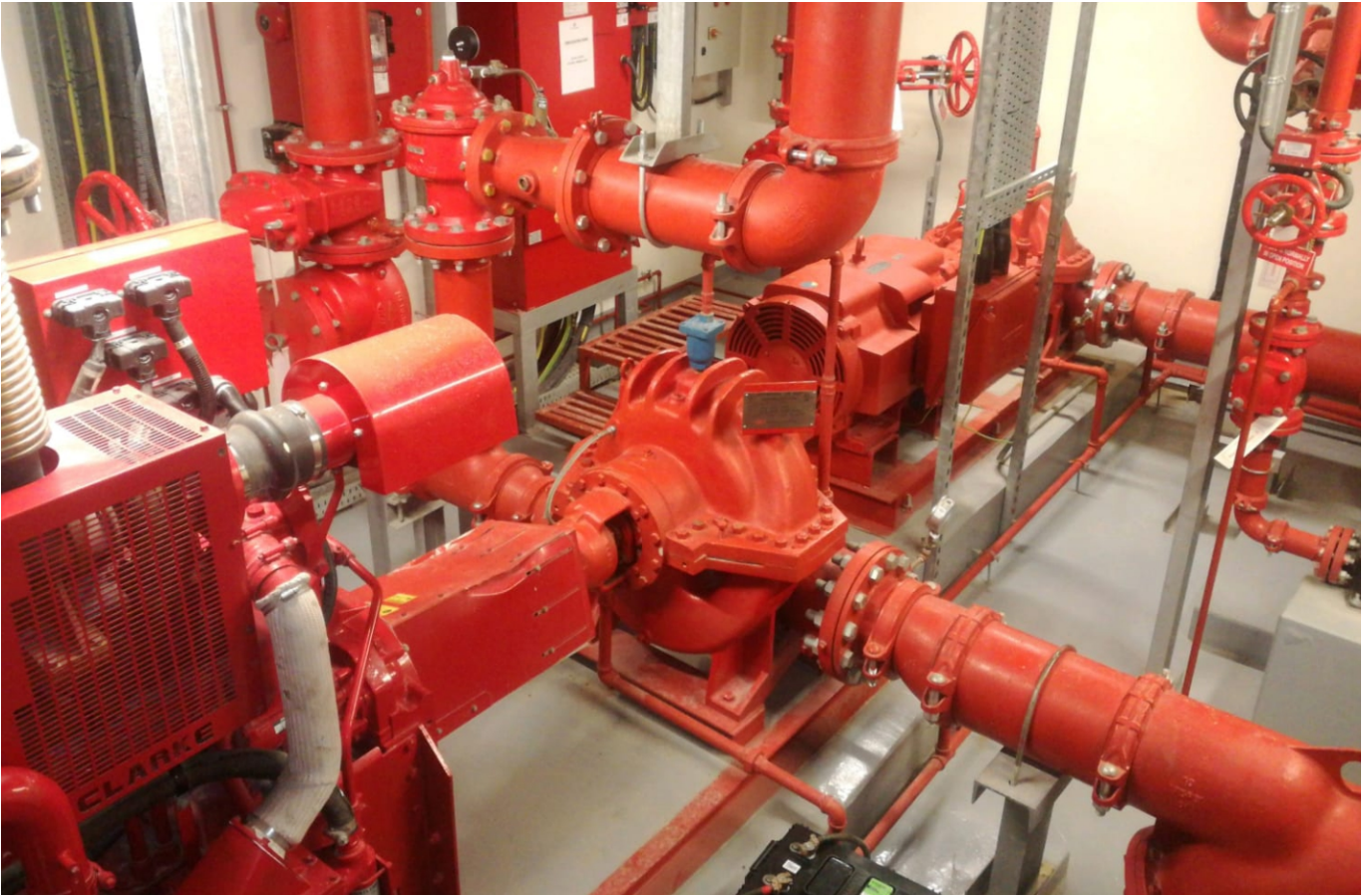


CREW ACCOMMODATION PROJECT



CREW ACCOMMODATION PROJECT





BURJ AL MARINA



ELEMANTRY SCHOOLS FOR ASHGHAL



ELEMANTRY SCHOOLS FOR ASHGHAL



KINDERGARTEN SCHOOLS FOR ASHGHAL



12 NOS. DEPARTURE GATES AT DIA



12 NOS. DEPARTURE GATES AT DIA



FLIGHT SIMULATOR CENTER FOR QATAR AIRWAYS



SEWER TANKER RECEIVING STATION



SEWER TANKER RECEIVING STATION



